


Imagine if...

The support families received was practical, adaptable, tailored, safe, and early.

Global Day of Parent's Forum 2023
Thursday, 1 June 2023.



Facilitated by Diane DePanfilis, PhD, MSW
Professor & Associate Dean For Research
Silberman School of Social Work
at Hunter College, CUNY

Why is this important?

- It is not easy being a parent
- Waiting until problems seriously impact parenting capacity reduces the likelihood of success.
- One size does not fit all!
- When we are unable to tailor our response, our systems end up serving the same families multiple times.



Some history...

Photo by [McGill Library](#) on [Unsplash](#)

What are the benefits of a new approach?

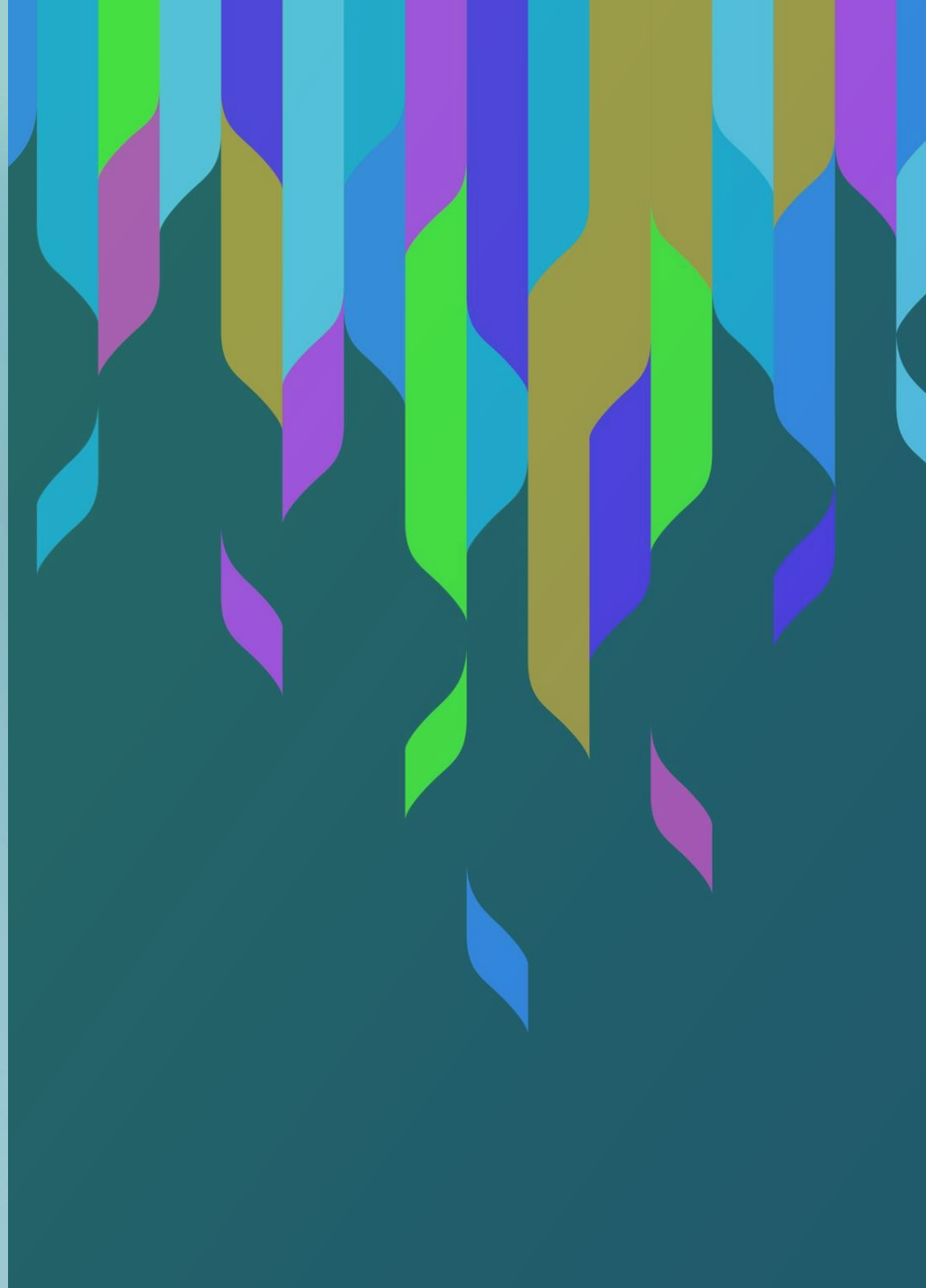


US Federal shift toward Family Support and Prevention

[Jerry Milner](#)

Principles for a new approach

And some basic ingredients



Use of a Risk and Protective Factor Framework

- Risk Factors are “conditions or attributes of individuals, families, communities, or the larger society that increase the probability of poor outcomes” (Harper Browne, 2014, page 18).
- Protective Factors are “conditions or attributes of individuals, families, communities, or the larger society that mitigate or eliminate risk” (Harper Browne, 2014, page 18).



Emphasis on Strengths & Protective Factors

- For example, explore:
 - Family functioning
 - Parenting attitudes
 - Cultural traditions
 - Social Support
 - Resources



Emphasis on Risks in Context of Strengths

- For example, explore:
 - Sufficiency of family resources
 - Cumulative concerns and interactions
 - Parenting and life stress
 - Environmental challenges



Individualize Assessment

- Consider the interplay of risk and protective factors
- Use of standardized assessment instruments to support parents to tell their stories

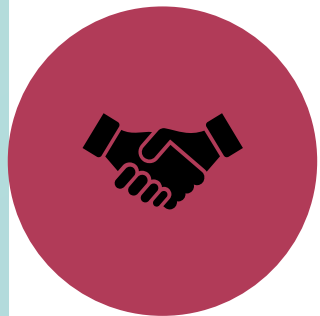
Use of Standardized Assessment Instruments



Select standardized assessment instruments to administer facilitate discussion of strengths and risk



Administered via a Computer-Assisted Self Interview (CASI), providing a means of easily working with family- and program-level data

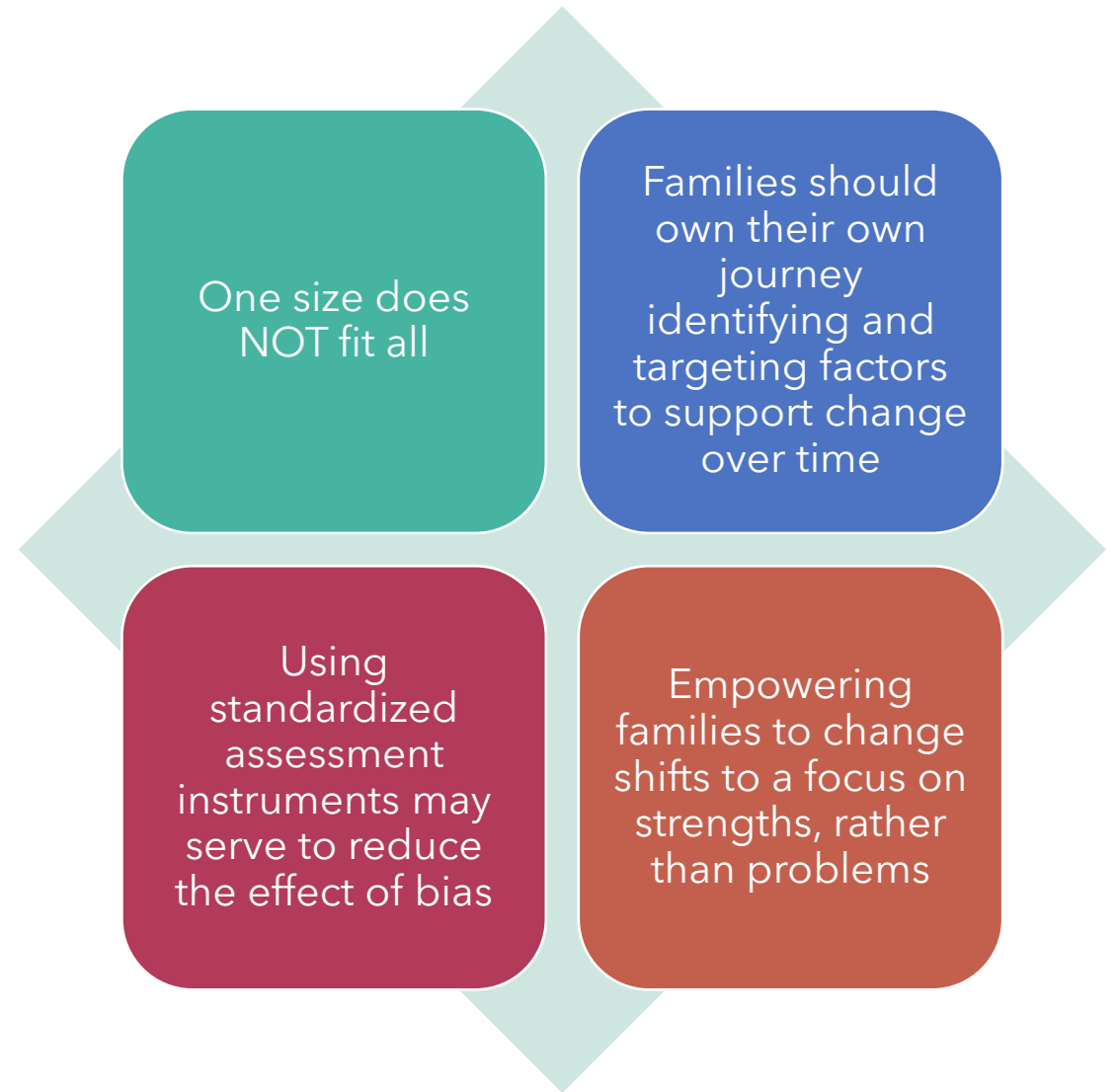


Each instrument should directly relate to a Core Outcome and provide an objective measurement of that aspect of caregiver/family functioning



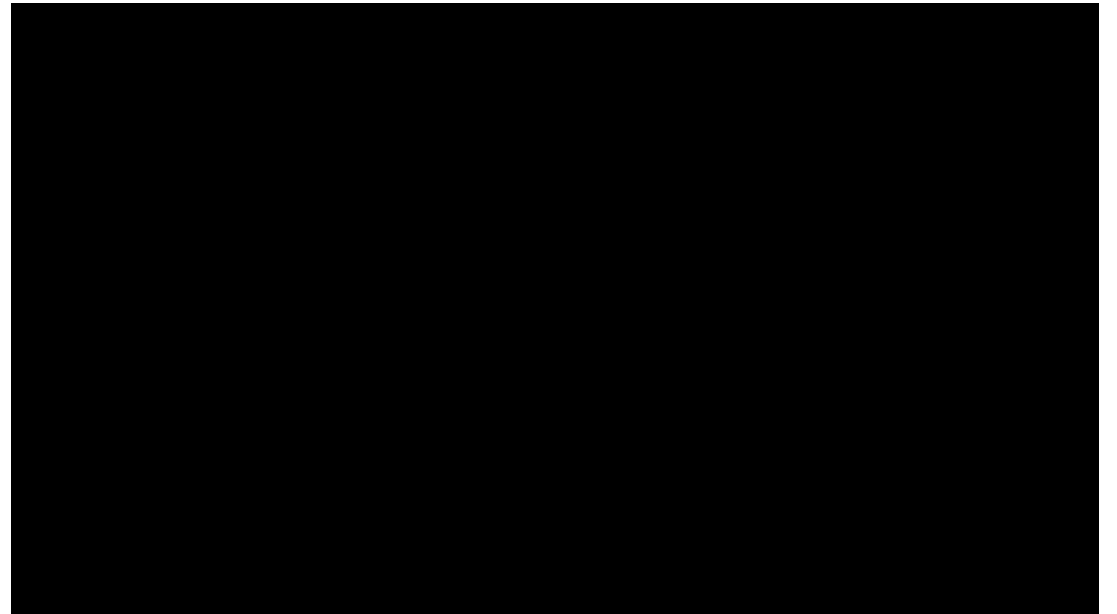
Results are discussed with the caregiver(s), who then collaborate in the selection of the Core Outcome(s) to be included on an Outcome-Driven Service Plan

Time to shift from a Service Driven System to A Change Driven System



Importance of Supervisory Coaching

- Supervisory coaching supports practitioners to build partnerships with families and to emphasize strengths and to tailor approaches.



Key Ingredients
to support
implementation

Leadership

Supervision

Peer Supports

Organizational Culture

Benefits

Your view of benefits of a new approach



Benefits

Questions and discussion?

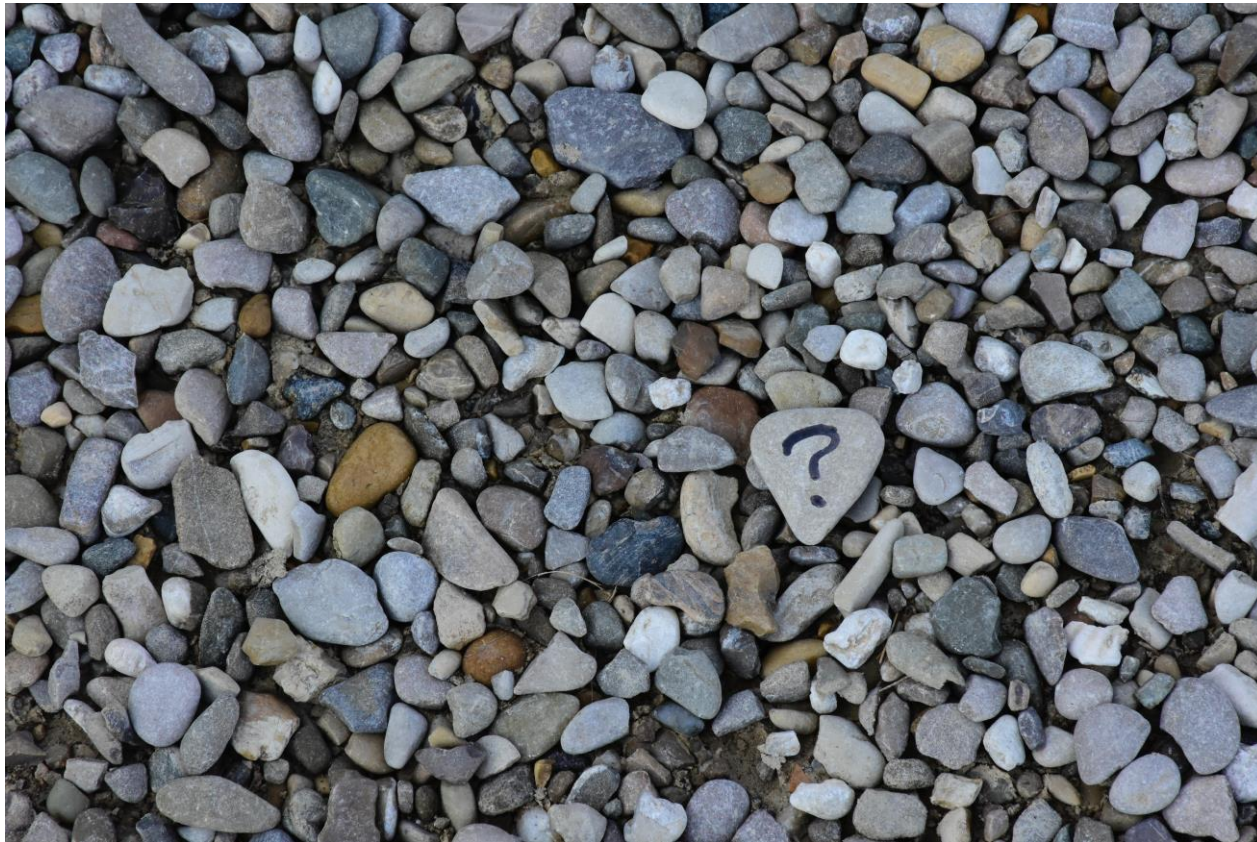


Photo by [Ana Municio](#) on [Unsplash](#)