

Homefront Princess Alexandra Hospital



Homefront Princess Alexandra Hospital (PAH) program works in partnership with the Inclusive Health and Wellness Hub to deliver integrated outreach services.

Homefront PAH is a multidisciplinary team who provide clinical and non clinical support to people experiencing or at risk of homelessness, who also have significant health concerns. It is a collaboration between Micah Projects, Princess Alexandra Hospital and primary healthcare providers.

The goals of Homefront PAH are to:

- » enhance and maintain access to clinical support through nursing care;
- » facilitate access to appropriate safe housing and assist people to sustain their tenancy;
- » coordinate social and health outcomes through effective service coordination;
- » reduce reliance on emergency services such as the Princess Alexandra Hospital Emergency Department; and
- » provide continuity of care when engaged with Micah Projects – Street to Home team by working with people sleeping on the streets, in cars, motels, and other forms of inappropriate housing.

Referrals to Homefront PAH are received from the Princess Alexandra Hospital to improve options for care post-discharge or to people with significant health issues who require assistance to access primary health care.

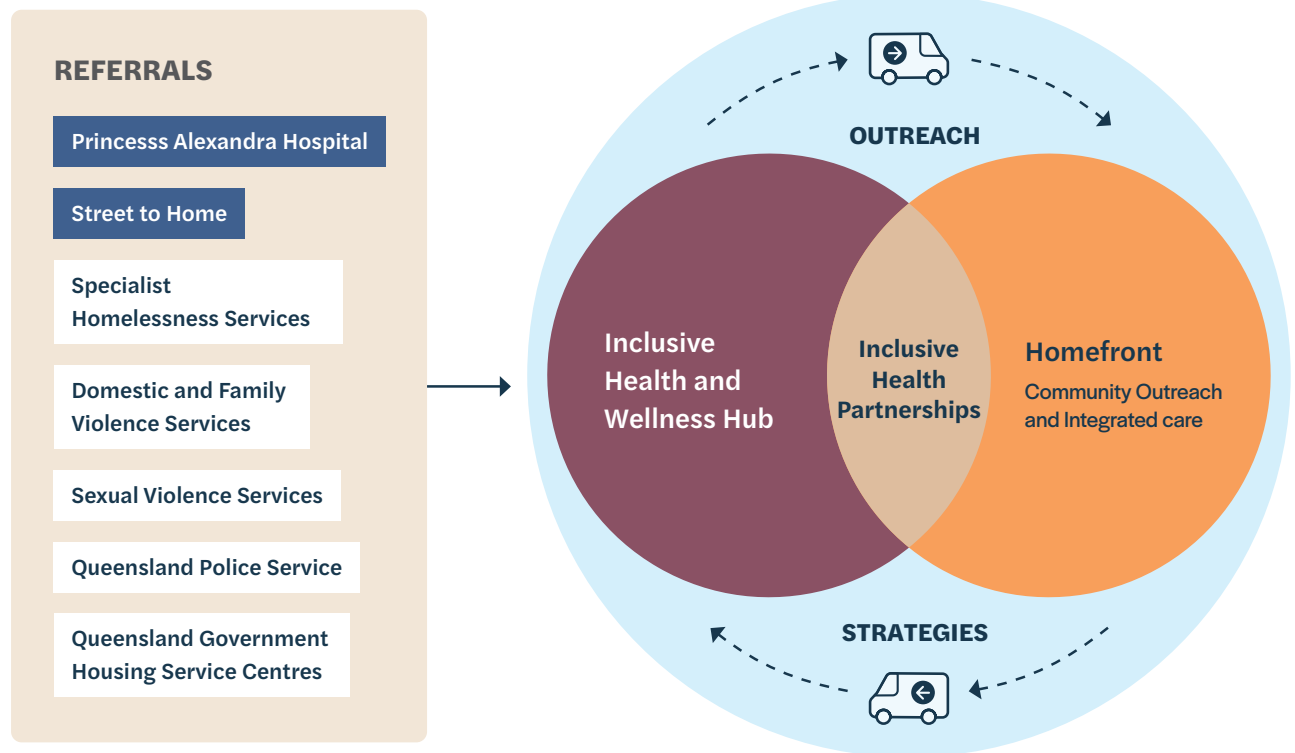
Referrals are also received from the Street to Home team for people with significant health issues who require assistance to access primary healthcare.

Referring to the Homefront PAH Team

If you work with a person who would benefit from Homefront PAH services, please call us or visit the Inclusive Health and Wellness Hub website to access the relevant referral form: <https://inclusivehealth.org.au/services#homefront>

The primary inclusion criteria are:

- » poor health requiring effective clinical management in the community;
- » homeless or vulnerably housed people who are experiencing social isolation; and
- » the likely requirement for other community support.



What is the Inclusive Health and Wellness Hub?

The 'Hub' is located in South Brisbane and is funded by Queensland Health. It is a primary care centre offering general practitioners, nurses, allied health practitioners, dentists, alternative therapies and community/psycho-social support.



AN ACTIVITY OF  MICAH PROJECTS

(07) 3013 6050

homefrontPAH@micahprojects.org.au
inclusivehealth.org.au | micahprojects.org.au

Shop 2, 15 Hope Street, South Brisbane Q 4101

Micah Projects Homefront PAH
Fact Sheet. January 2023